

Wednesday, May 1, 2013
De Neve Auditorium, UCLA

Keynote Speaker
Jaime Sepulveda, MD, MPH, DSc
Executive Director, Global Health Sciences, UCSF
Former Director, Mexico National Institutes of Health



UCLA BLUM CENTER on Poverty and Health in Latin America

*Working across boundaries to reduce poverty
and health inequalities in Latin America*

Inaugural Spring Symposium

Informing Responses to Reduce Poverty
and Improve Health in Latin America



From the Director

Welcome, Colleagues!

Today, I invite you to listen, learn, and, most importantly, begin to take action to mitigate the effects of poverty, gender inequity, migration, poor living conditions, policy deficits and other social determinants of health in Latin America.

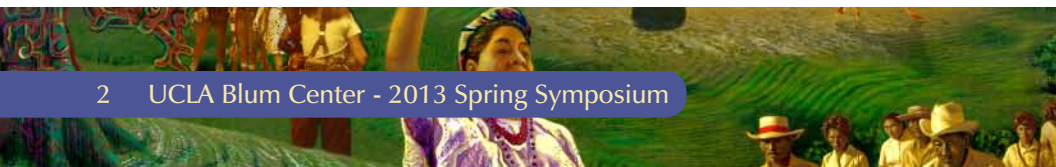


I hope you will be inspired by our keynote speaker, Jaime Sepulveda, MD, former director of Mexico's National Institutes of Health, who will impart first-hand knowledge of innovative financing mechanisms to improve health in Latin America. Following Dr. Sepulveda's address, our three panels will offer: commentary and forecasts on health in Latin America from many of UCLA's schools and colleges; discussion on how migration and urbanization are changing the landscape for Latin American health services; and thoughtful insight on policies needed to address the social determinants of health in Latin America.

You will also hear how our emerging UCLA Blum Center plans to encourage research efforts, build training programs and design policy – all with a multidisciplinary approach among UCLA schools, colleges, institutes and centers as well as domestic and international organizations with similar interests.

Together, we will strive to be the premiere resource for those working within Latin America to improve health throughout the region. Thank you for joining us in this effort!

Best regards,
Michael A. Rodríguez, MD, MPH
Center Director
Professor, UCLA David Geffen School of Medicine,
Department of Family Medicine





Symposium Objectives

- 1 To analyze the social and economic norms that contribute to stratification and subsequent inequality in health in Latin America;
- 2 To examine differences in approaches to health inequality in Latin America;
- 3 To learn about and assess innovative policy and programmatic solutions created to reduce poverty and health inequality in Latin America;
- 4 To identify potential areas for government investments in public health expenditures.

UCLA Collaborators

The Spring Symposium is supported by the UCLA Blum Center, along with schools and colleges of UCLA, including:

College of Letters and Science,
Division of Humanities and the
Division of Social Sciences
David Geffen School of Medicine
Fielding School of Public Health
Graduate School of Education &
Information Studies

Luskin School of Public Affairs
School of Dentistry
School of Law
School of Nursing
Department of Sociology

And, several UCLA institutes and centers, including:

Center for World Health
Center of Expertise in Women's
Health and Empowerment
Center of Expertise
on Migration and Health

Chicano Studies Research Center
International Institute
Latin American Institute
Program on International Migration

About the Artwork

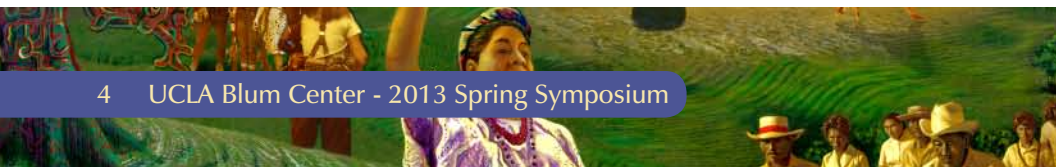
The mural artwork used on the UCLA Blum Center website and this program has been provided by renowned artist and UCLA Professor Judy Baca. The artwork, entitled, "Migration of the Golden People" was developed with youth participants and Central American scholars on the migration of the 1980s of Central Americans to Los Angeles.





Symposium Program

8:30- 9:00 AM	Light Breakfast and Networking Plaza Room / De Neve Auditorium / Patio / Hallway
9:00- 9:20 AM	Opening Remarks / De Neve Auditorium Welcome MICHAEL A. RODRIGUEZ, MD, MPH Director, UCLA Blum Center The Importance of the UCLA Blum Center SCOTT L. WAUGH, PhD Executive Vice Chancellor and Provost, UCLA
9:20- 9:50 AM	Keynote Speaker / De Neve Auditorium Mesoamerica Health Initiative: Innovative Financing Mechanisms to Improve Health in Latin America JAIME SEPULVEDA, MD, MPH, DSc Executive Director, Global Health Sciences, UCSF
9:50- 10:50 AM	Crossing the Borders: A Dialog with UCLA Deans and Other Leaders on Interdisciplinary Efforts to Improve Health in Latin America / De Neve Auditorium Facilitator: TIMOTHY BREWER, MD, MPH Vice Provost, UCLA Interdisciplinary and Cross-Campus Affairs Speakers: ALESSANDRO DURANTI, PhD Dean, Division of Social Sciences; UCLA College of Letters and Science JODY HEYMANN, MD, PhD, MPP Dean, UCLA Fielding School of Public Health RACHEL MORAN, JD Dean, UCLA School of Law DAVID SCHABERG, PhD Dean, Division of Humanities, UCLA College of Letters and Science CINDY FAN, PhD Interim Vice Provost, UCLA International Studies
10:50- 11:05 AM	Break





Symposium Program

<p>11:05 AM- 12:05 PM</p>	<p>Panel #1: Migration / Urbanization / De Neve Auditorium Facilitator: ROGER WALDINGER, PhD Distinguished Professor of Sociology, UCLA College of Letters and Science Speakers: STEVEN WALLACE, PhD Chair, Department of Community Health Science, UCLA Fielding School of Public Health LEO ESTRADA, PhD Director, UCLA North American Integration and Development Center, UCLA Luskin School of Public Affairs LINDA DELP, PhD, MPH Director, UCLA-Labor Occupational Safety and Health Program</p>
<p>12:10- 1:10 PM</p>	<p>Luncheon / Plaza Room, De Neve Auditorium Presentation of UCLA Blum Center Summer Scholars Remarks: Judy Baca, UCLA Professor, César E. Chávez Center</p>
<p>1:10- 1:30 PM</p>	<p>Poster Presentations: Meet the Authors</p>
<p>1:35- 2:30 PM</p>	<p>Panel #2: Policy Issues Related to Social Determinants of Health in Latin America / De Neve Auditorium Facilitator: ADELINE NYAMATHI, ANP, PhD, FAAN Associate Dean, International Research and Scholarly Activities at UCLA Speakers: THOMAS COATES, PhD Director, UCLA Center for World Health LARA STEMPLE, JD Director, Health and Human Rights Law Project, UCLA School of Law EMMA AGUILA, PhD Director, Center for Latin American Social Policy, Pardee RAND Graduate School</p>
<p>2:30- 3:00 PM</p>	<p>Closing Remarks / De Neve Auditorium DAVID E. HAYES-BAUTISTA, PhD Director, Center for the Study of Latino Health and Culture MICHAEL A. RODRIGUEZ, MD, MPH Director, UCLA Blum Center</p>





Keynote Speaker



JAIME SEPULVEDA, MD, MPH, DSc

Executive Director, UCSF Global Health Sciences

Dr. Sepulveda is the Executive Director of UCSF Global Health Sciences, and Professor of Epidemiology at University of California, San Francisco. From 2007 to 2011, Dr. Sepulveda was Senior Fellow in the Global Health Program of the Bill & Melinda Gates Foundation. From 2003 to 2006, he served as director of the National Institutes of Health of Mexico. He also served for a decade as director-general of Mexico's National Institute of Public Health and Dean of the National School of Public Health. In addition to his research

credentials, Sepulveda is an experienced implementer of effective health programs. As Mexico's director-general of epidemiology and later Vice-Minister of Health, Sepulveda designed Mexico's Universal Vaccination Program, which eliminated polio, measles, and diphtheria by more than doubling childhood immunization coverage in two years. He also modernized the national health surveillance system and founded Mexico's National AIDS Council.

Speakers

EMMA AGUILA, PhD

Director, Center for Latin American Social Policy,
Pardee RAND Graduate School

Dr. Aguila is the Director of the RAND Center for Latin American Social Policy. Her research interests include the economics of aging, labor and development, and health with particular focus on poverty alleviation policies.

She is currently leading a large randomized controlled trial to evaluate the impact of a noncontributory social security program.



TIMOTHY BREWER, MD, MPH

Vice Provost, UCLA Interdisciplinary and Cross-Campus Affairs

Dr. Brewer is a physician and epidemiologist whose research focuses on the prevention and control of infectious diseases in populations. He is also a national and international leader in the development of global health training programs. At UCLA, he works with faculty and campus leadership to promote interdisciplinary and cross-campus research, education and service programs.

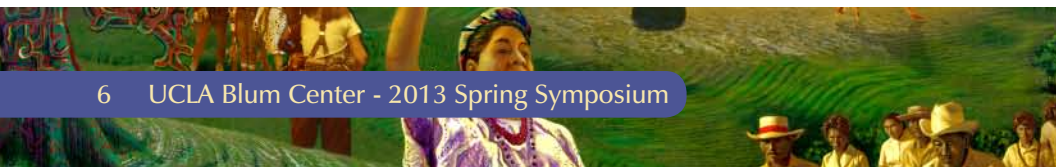
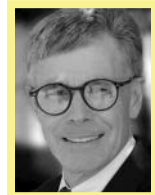
THOMAS COATES, PhD

Director, UCLA Center for World Health,

Michael and Sue Steinberg Professor of Global AIDS Research

Dr. Coates was recently named Director of the Center for World Health at the David Geffen School of Medicine and the UCLA Health Systems. He also leads the UCLA Program in Global Health within the Division of Infectious Diseases and is the Co-Director of the University of California Global Health Institute (UC GHI). He is now directing a 48-community, randomized clinical trial in South Africa, Zimbabwe, Tanzania and Thailand and is also

conducting research in Uganda, Peru, and China.





Speakers



LINDA DELP, PhD, MPH
Director, UCLA-LOSH Program
Dr. Delp directs the UCLA Labor Occupational Safety and Health Program, founded in 1978 to promote safe jobs and worker health. She has more than 20 years experience creating bilingual health and safety education and research programs for workers in the United States and Mexico. She has developed union and labor-management programs in a variety of industries ranging from manufacturing to meatpacking to health care.

ALESSANDRO DURANTI, PhD
Dean, Division of Social Sciences, UCLA College of Letters and Science
Dr. Duranti has carried out ethnographic fieldwork in Samoa and in the United States, where he studied political discourse, verbal performance, and everyday routine interactions. He is the author of five books on linguistic anthropology and is a Fellow of the American Academy of Arts and Sciences, past President of the Society for Linguistic Anthropology, and recipient of multiple awards for his work in anthropology and teaching.



LEO ESTRADA, PhD
Director, UCLA North American Integration and Development Center, UCLA Luskin School of Public Affairs
Dr. Estrada is the Director of the Global Governance program that takes place in Geneva, Switzerland. His areas of expertise include ethnic and racial demographic trends, particularly of the Latino population in the United States, inner city redevelopment, social policy analysis and research methods. Dr. Estrada is a board member of New Economics for Women.

CINDY FAN, PhD
Interim Vice Provost, UCLA International Studies
Dr. Fan directs the International Institute that comprises nearly 30 interdisciplinary centers and degree programs on world regions and global issues. Prior to her current appointment, Dr. Fan served as Associate Dean of Social Sciences, Chair of the East Asian Studies Interdepartmental Program, and Chair of the Asian American Studies Department. Her research focuses on migrants and migrant households in China.



DAVID E. HAYES-BAUTISTA, PhD
Director, Center for the Study of Latino Health and Culture
Dr. Hayes-Bautista is a Professor of Medicine at the David Geffen School of Medicine at UCLA. He has written numerous books and writes columns for the *Los Angeles Times* and *La Opinion*. In 2012 he received the Association of American Medical Colleges Herbert W. Nickens Award for his lifelong concerns about the educational, societal, and health care needs of underrepresented groups.





Speakers

JODY HEYMANN, MD, PhD, MPP

Dean, UCLA Fielding School of Public Health
Dr. Heymann became Dean of the Jonathan and Karin Fielding School of Public Health in January 2013. Prior to coming to UCLA, Dr. Heymann held a Canadian Chair in Global Health and Social Policy at McGill University in Montreal, Quebec and was the Founding Director of the Institute for Health and Social Policy, the Project on Global Working Families and the World Policy Analysis Center (WPAC).



RACHEL MORAN, JD

Dean, UCLA School of Law

Dr. Moran received her JD from Yale Law School in 1981. Prior to her appointment at UCLA, Dr. Moran was the Robert D. and Leslie-Kay Raven Professor of Law at UC Berkeley School of Law. She is a founding faculty member of the UC Irvine Law School. In September 2011, she was appointed by President Obama to serve as a member of the Permanent Committee for the Oliver Wendell Holmes Devis.



ADELINE NYAMATHI, ANP, PhD, FAAN

Associate Dean, International Research and Scholarly Activities at UCLA For more than a decade, Dr. Nyamathi's research has focused on HIV, hepatitis and tuberculosis behavioral and prevention research with homeless, drug-addicted, and impoverished ethnic minority adults and youth. Since 1988, she has served as principal investigator for NIH-funded research to advance community-based knowledge with difficult-to-reach populations.

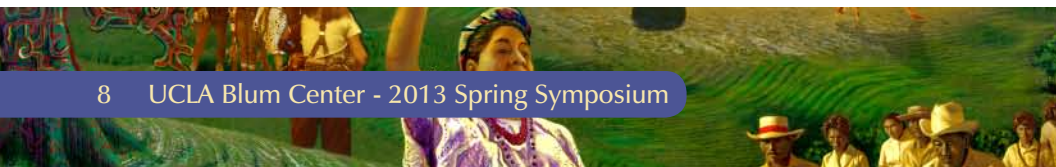


Master of Ceremonies

MICHAEL A. RODRÍGUEZ, MD, MPH

Director, UCLA Blum Center
Professor, UCLA David Geffen School of Medicine,
Department of Family Medicine

Dr. Rodríguez has consulted for the World Health Organization, UNICEF, the Pan American Health Organization, the Centers for Disease Control and Prevention and the Institute of Medicine. His research activities focus on ethnic/racial health care disparities including violence prevention and patient-provider communication of sensitive issues. Dr. Rodríguez mentors and teaches UCLA faculty and trainees in a wide range of schools while volunteering at a community health center serving uninsured patients in Los Angeles.





Speakers



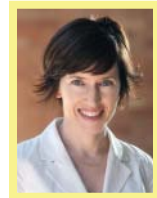
DAVID SCHABERG, PhD

Dean, Division of Humanities,
UCLA College of Letters and Science

Dr. Schaberg is past Chair of Asian Languages & Cultures and Co-Director of the Center for Chinese Studies, Schaberg has published articles on early Chinese literature, historiography, and philosophy as well as Greek/Chinese comparative issues. He is author of *A Patterned Past: Form and Thought in Early Chinese Historiography*, which was awarded the 2003 Levenson Prize for Books in Chinese Studies

LARA STEMPLER, JD

Director, Health and Human Rights Law Project, UCLA School of Law
Dr Stemple oversees the law school's LLM (masters) and SJD (doctoral) degree programs. She teaches and writes in the areas of human rights, global health, gender, sexuality, HIV/AIDS, and incarceration. She is also the Deputy Co-Director of the new UC Global Health Institute's Center of Expertise on Women's Health and Empowerment.



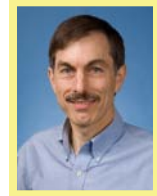
ROGER WALDINGER, PhD

Distinguished Professor of Sociology, UCLA College of Letters and Science
Dr. Waldinger has served as Interim Associate Vice Provost for International Studies from 2010-2012, Chair of the Department of Sociology from 1999 to 2004 and Director of the Lewis Center for Regional Policy from 1995 to 1998. His research has been supported by grants from the Ford, Haines, Mellon, National Science, Sloan and Russell Sage Foundations.

STEVEN WALLACE, PhD

Chair, Department of Community Health Sciences,
UCLA Fielding School of Public Health

Dr. Wallace is also Associate Director of the UCLA Center for Health Policy Research. He has studied migration issues since the mid-1980s when he published work on Central American immigration to the United States and the effects of immigration reform (IRCA) on immigrant communities in the San Francisco Bay area. His interest in migration issues has focused primarily on access to health care, especially for Latin American immigrants and in Latin America.



SCOTT L. WAUGH, PhD

Executive Vice Chancellor and Provost, UCLA

Dr. Waugh is the Chief Operating and Academic Officer for the campus. He works closely with the Chancellor and an extensive group of campus colleagues in guiding strategic planning, policy development, campus-wide academic initiatives and in defining budgetary and development priorities. He has previously served as the Dean of the Division of Social Sciences in the College of Letters and Science, where he holds a professorial appointment in the Department of History.





About the UCLA Blum Center

blumcenter.ucla.edu

Mission



The UCLA Blum Center, in collaboration with Latin American institutions, brings poverty and other social determinants of health to the forefront of research and training on health in Latin America. Through the work of our Center, students and faculty across disciplines and borders study the causes of poverty and health inequalities. Together, we seek to identify and promote solutions in health policy and practice.

The mission of the UCLA Blum Center on Poverty and Health in Latin America is achieved through programs and activities addressing three goals related to research, policy, and training.

Goal One: Research

To assess and inform responses to the social determinants contributing to health inequities among Latin American populations.

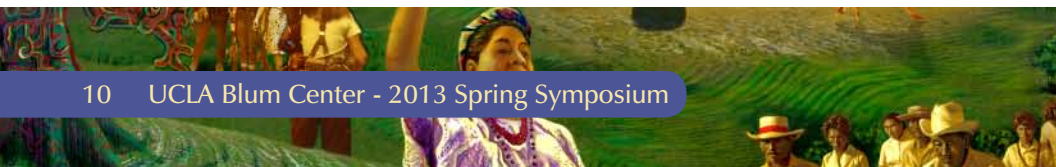
Goal Two: Policy

To examine policies on poverty and health in Latin America and identify effective policy strategies within the region in order to make educated recommendations on policy enhancements.

Goal Three: Training

To educate students and train new researchers about the responses to social determinants of health in Latin America through courses, symposia, and field studies.

10880 Wilshire Boulevard, Suite 1800 Los Angeles, California 90024
310.794.0394 (p) 310.794.6097 (f)





Poster Presentations: Poverty and Health in Latin America

Through a faculty-review process, the following posters were selected from undergraduate students enrolled in the Freshman Cluster Course, Poverty and Health in Latin America. Faculty mentors providing guidance to students include: Drs. Michael A. Rodriguez, Bonnie Taub, Javier Iribarren, and Stephen Commins.

Structural Adjustments and their Impact on Nicaragua's Health Care System
JESSICA AGUILERA

Asociación La Alianza in Combating Human Trafficking
BRIANNA BOCKMAN

An Attempt at Reducing HIV Transmission among Adolescents in Urban Colombia
ABRAM PAUL CERDA

The Importance of Water Sanitation in Rural El Salvador : Mi Escuela Saludable SWASH+
JESSICA ESMERALDA CUBIAS

The Brazilian Response: Evaluating the Effectiveness of the National STD/AIDS Programme
GLORIA GALLARDO

Participatory Approach to HIV Prevention
RHEA MATHEW

Housing Improvement and Chagas' Disease Control in the Southern Cone
GILBERTO PADILLA MERCADO

The Nicaraguan Literacy Crusade of 1980
LÉSTER A. ROSALES

The Ongoing Femicide in Ciudad Juarez
AILEEN SANCHEZ

Getting People Moving in Mexico City: A Program Analysis
ERIN STANDEN

UCLA Blum Center Summer Intern Scholars

Congratulations to these undergraduate students who have been selected to participate in this summer's eight week Summer Scholar Program to take place in Los Angeles.

SHAHRIYAR JAHANBAKHSH
ALDANA GARCIA

ERIN STANDEN
ABRAM PAUL CERDA

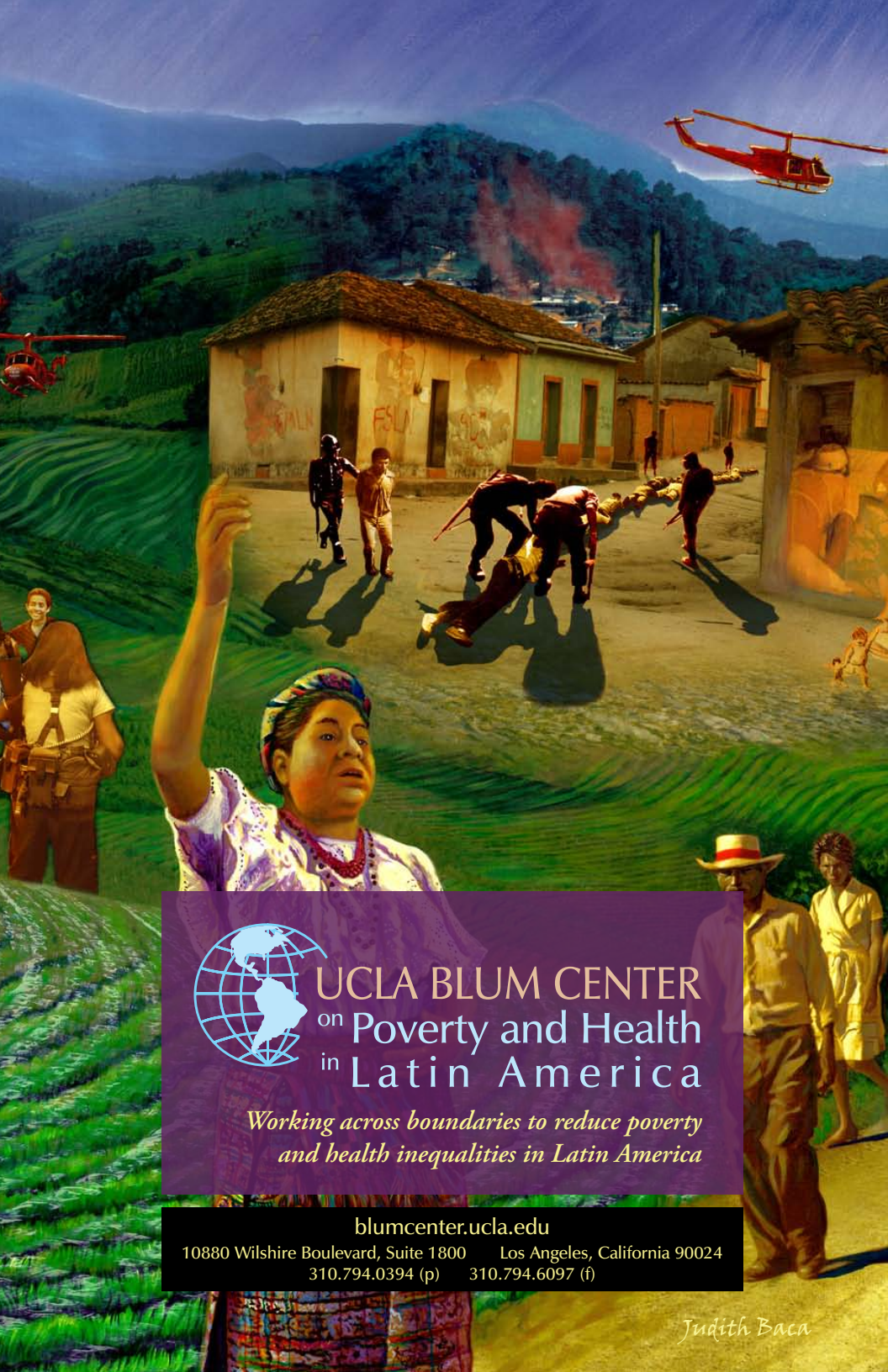
JESSICA CUBIAS
ELIZABETH PADILLA

The UCLA Blum Center also announces the selection of two graduate students who will live and work in Latin America to conduct research with one of the UCLA Blum Center partners. We look forward to hearing the results of their work at an upcoming UCLA Blum Center event.

CLAIRE C. BRISTOW, MSc, MPH-CANDIDATE

REBECCA FOELBER, DVM, MPH STUDENT





UCLA BLUM CENTER
on Poverty and Health
in Latin America

*Working across boundaries to reduce poverty
and health inequalities in Latin America*

blumcenter.ucla.edu

10880 Wilshire Boulevard, Suite 1800 Los Angeles, California 90024
310.794.0394 (p) 310.794.6097 (f)

Judith Baca